

Gaveta Metal H180

hardt

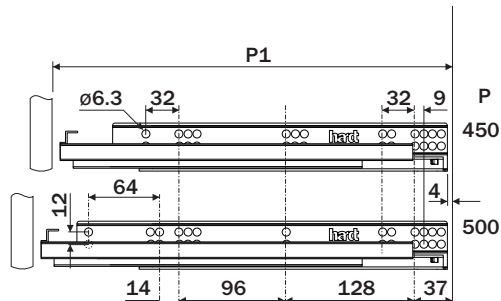
Dados do Produto

Código	Comp.P	Comp.P1
S0318CZ	450	455
S0320CZ	500	505
Abertura	Extração Total	
Altura da Gaveta	180.5	
Capacidade de Carga referencial	máx. 35Kg	
Acabamento	Cinza	

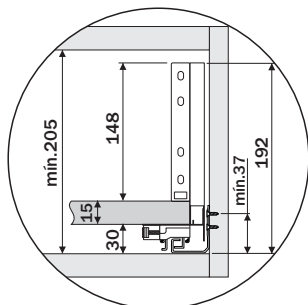
Componente

Item	Componente	Quant.
1	Corrediças Embutidas	02
2	Laterais H180	02
3	Conectores Frontais + Parafusos	02
4	Parafusos AACP4X16	20
5	Capa Acabamento Lateral	02

Furação da Corrediça



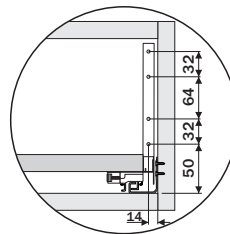
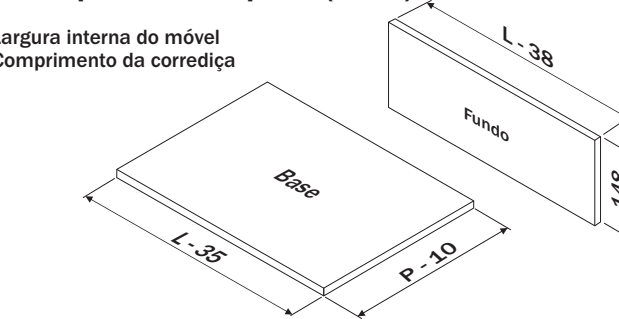
Vista frontal



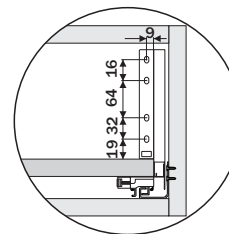
Espaço mínimo necessário

Dimensões para o corte dos painéis (15mm)

L= Largura interna do móvel
P= Comprimento da corrediça

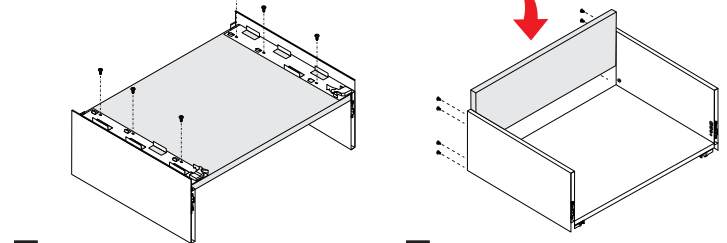


Fixação conectores frontais



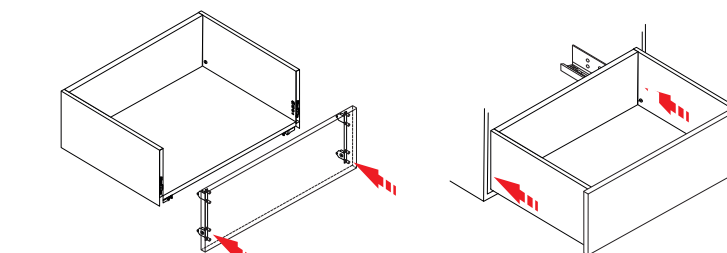
Fixação fundo

Montagem da Gaveta



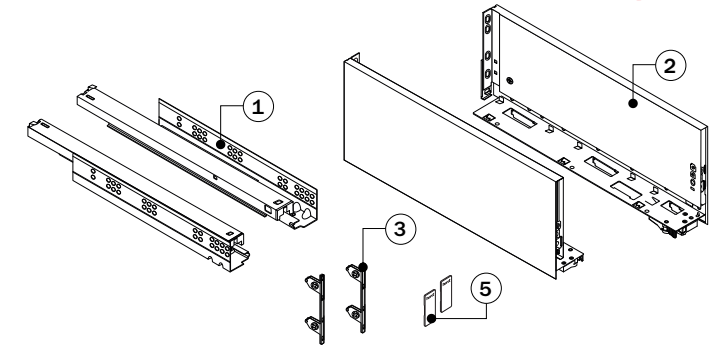
1 Fixar as laterais na base da gaveta.

2 Fixar o fundo da gaveta.



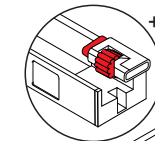
3 Fixar os conectores frontais utilizando os parafusos AACP4X16 e encaixar a frente da gaveta nas laterais.

4 Fixar as corrediças e deslizar a gaveta sobre elas para efetuar o travamento do fixador. (localizado nas laterais)

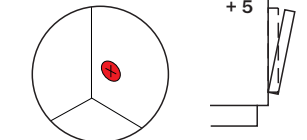


Ajustes 3D

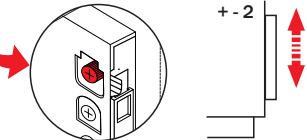
Regulagem profundidade (corrediça)



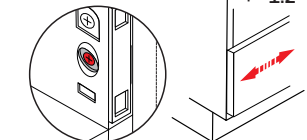
Regulagem inclinação



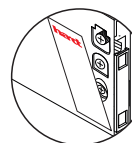
Regulagem vertical



Regulagem horizontal

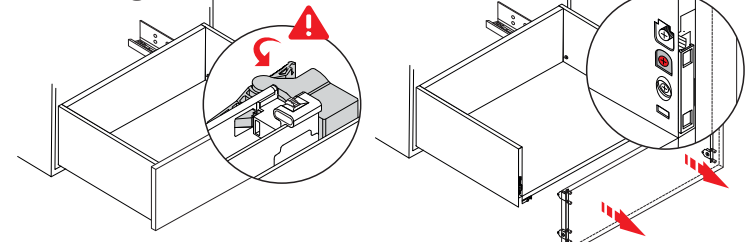


Acabamento



Após a regulagem, encaixe as capas de acabamento.

Desmontagem da Gaveta



1 Destruir os fixadores liberando a gaveta da corrediça.

2 Girar o parafuso de travamento desconectando a frente da gaveta.