

Lateral Gaveta Metálica Slim

hardt

Dados do Produto

Código	Altura	Comp.P	Comp.P1
S0416CZ	89	400	405
S0418CZ	89	450	455
S0420CZ	89	500	505
S0516CZ	127	400	405
S0518CZ	127	450	455
S0520CZ	127	500	505
S0618CZ	157	450	455
S0620CZ	157	500	505
Acabamento			Cinza

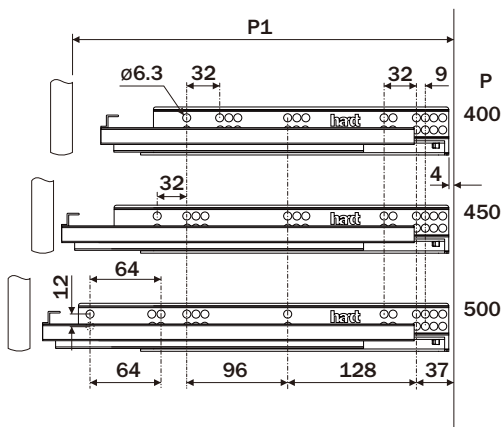
Componentes

Item	Componente	Quant.
1	Laterais	02
2	Parafusos AACC4.0X16	20
3	Parafusos AACC3.5X20	04
4	Capa Acabamento Lateral	02

Corrediças Compatíveis

Tipo	400	450	500
Embutida Soft Closing	B3203ZN	B3303ZN	B3403ZN
Embutida Soft Closing 3D	B3207ZN	B3307ZN	B3407ZN
Embutida Push Open	B3216ZN	B3316ZN	B3416ZN

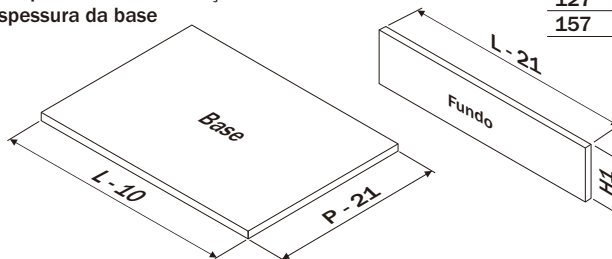
Furação da Corrediça



Dimensões para o corte dos painéis

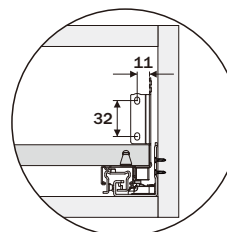
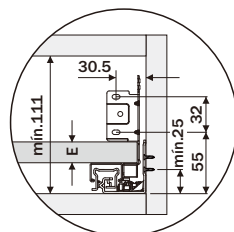
L= Largura interna do móvel
P= Comprimento da corrediça
E= Espessura da base

Altura	H1
89	79 - E
127	117 - E
157	147 - E

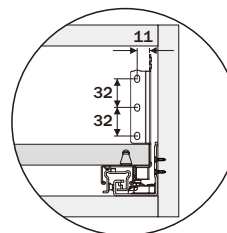
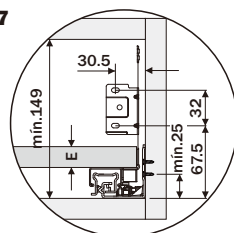


Vista frontal

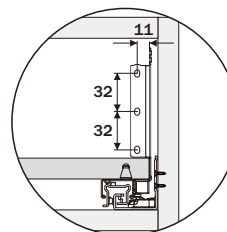
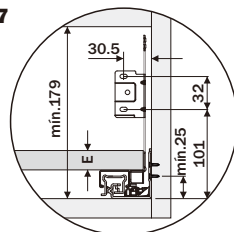
H89



H127

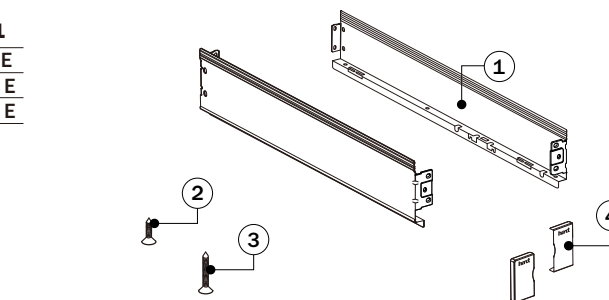


H157

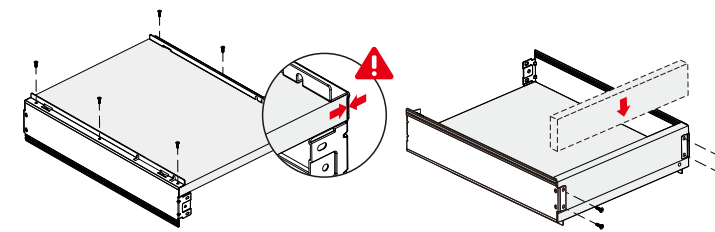


Fixação conectores frontais

Fixação fundo

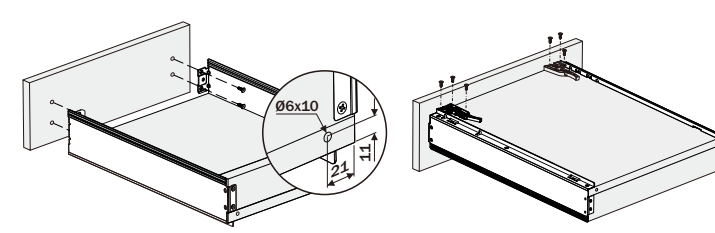


Montagem da Gaveta



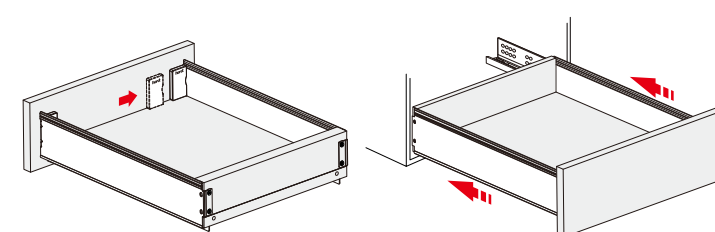
1 Fixar as laterais na base da gaveta.

2 Fixar o fundo da gaveta nas laterais.



3 Fixar a frente da gaveta.

4 Instalar os fixadores da corrediça.
(de acordo com o modelo da corrediça)



5 Encaixar as capas de acabamento.

6 Encaixar a gaveta nas corrediças.